

MINING PRODUCTS

Ground support products





Mining Products

SRG Global design, manufacture and supply advanced mining products for improved productivity, cost and safety. Offering an extensive range of products to our mining clients throughout Australia.

SRG Global manufacture and supply a wide range of geotechnical ground support products and equipment for the mining, tunnelling and civil engineering industries.

As well as offering an extensive range of our own highly acclaimed products, our specialist supply team also has access to a global supply network of recognised quality

suppliers, providing a range of solutions for all types of projects and budgets.

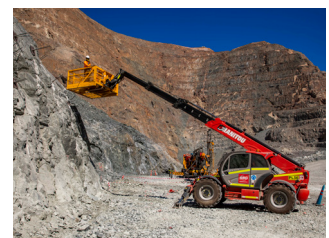
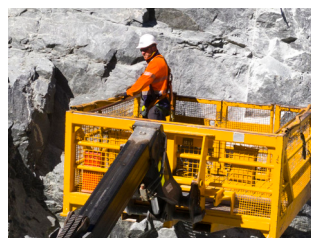
SRG Global focus on delivering high quality products in a safe and sustainable manner to benefit the project, client and community.

Ground Support Products

Cable Tensioning

Cable Bolts & Accessories

Grouting



Ground support products

Know you have the right product every time

Critical components in mines, bridges, roads, rail infrastructure and other civil projects, cable bolts, self-drilling anchors and rock bolts need to be reliable. Our highly experienced teams optimise the anchor design based on the local geology and environment as well as the load stresses to be placed on them.

Cable Bolts

SRG Global provide bulbed, plain, multistrand, debonded, corrosion protected cable bolts for ground and slope stabilisation. We also provide cable bolt accessories including bearing plates, packing, grout tube and barrel and wedges.

Self-drilling anchors

Through our network partner BBR, SRG Global provide BBR SDX self-drilling bar system for construction and mining applications. The BBR SDX system is a fully threaded hollow bar system, complete with a selection of accessories, designed to suit the widest variety of ground conditions and working environments. SRG Global's skilled personnel are experienced in the installation of these anchors.

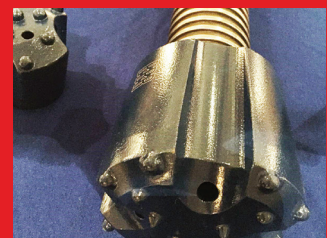
Rock Bolts

SRG Global provide rock bolts including rock anchors, soil nails, GFRP bars and self-drilling anchors.

Ground Support Accessories

SRG Global also provide a range of other ground support accessories including:

- Threadbar
- Friction stabilisers
- Mesh (roll mesh, sheet mesh and rockfall protection systems)
- W-strap (mesh straps and cable lacing)
- Dynamic support systems including conebolts and packaged yielding grout
- Geotechnical instrumentation including extensometres and piezometres
- Thin spray-on liners including Tunnelguard and Tunnelflex
- Grout and grout additives
- Scaling bars and accessories
- Bearing plates, domed washers and combination plates





Cable tensioning

SRG Global offer a range of cable tensioning and cutting units including the Cable Tensioning Cutting Dual Unit CTCD10R, Cable Tensioning CT10 and CT10R and the Cable Tensioning CT25 unit.

CABLE TENSIONING CUTTING UNIT CTCD10R

Use

Specifically designed as a lightweight, air operated hydraulic powered system for tensioning 15.2mm cable up to 100kN and cutting excess strand as required. The CTCD10R allows a remote controlled one man operation. A selector at the pump switches the unit from tensioning to cutting.

Suitability

- Steel bodied jack and cutter are robust for use in rough mining environments
- Cable bolts can be tensioned to a load up to ten tonnes
- Cutter can trim excess protruding strand
- Low weight of jack and cutter alleviates much of the physical stress
- Controls are suitable for one person operation

Design

- Spark free cutting process
- A pressure gauge and controls are fitted to the jack handle for the operator to apply more accurate loads
- Controls fitted to the cutter handle allow direct management of the cutting process
- Cutter safety shroud protects against cutter blade components. The cutting process is contained within the shroud
- Cutter catcher contains any strand ejected in the cutting process
- High quality hydraulic hoses and fittings are sleeved with wear resistant material to prevent damage. 10,000 psi hydraulic hoses are tested at a 4:1 ratio
- The pump is contained in a heavy duty metal case

CABLE TENSIONING CT10 & CT10R

Use

Both the CT10 and CT10R are specifically designed as lightweight, air operated hydraulic powered systems for tensioning 15.2mm cable up to 100kN.

Suitability

- Steel bodied jack is robust for use in rough mining environments
- Cable bolts can be tensioned to a load up to ten tonnes
- Low weight of jack and cutter alleviates much of the physical stress
- High quality hoses and fitting are sleeved with wear resistant material to prevent damage. 10,000 psi hydraulic hoses are tested at a 4:1 ratio

Design CT10

- This sturdy unit requires only minimal maintenance
- A pressure gauge is provided at the pump as a standard to enable accurate loads to be applied by the operator
- The pump is contained in a heavy duty metal carry case

Design CT10R

- Pressure gauge and controls are fitted to the jack handle for the operator to apply more accurate loads
- An internal safety relief valve is fitted to prevent the unit from operating at pressures beyond its intended specifications
- The cable stressing unit can be turned into a dual system by incorporating a remote hydraulic cable cutter

CABLE TENSIONING UNIT CT25

Use

Specifically designed for use in the harsh mining environment the CT25 is ideally suited to the 15.2mm cable bolt strand and has a load capacity of 25 tonnes.

Suitability

- The PA554 pump is capable of consistent high speed operation
- The pump is housed in a heavy duty steel tank and has a carry handle
- Unit is supplied with an inline oiler / filter to protect the pump and ensure a long life with minimal maintenance
- The pump is easy to operate with an internal safety relief valve and an external adjustable valve
- A pressure gauge is provided as standard to enable accurate tensioning loads to be applied
- High quality 10,000 psi hydraulic hoses are tested at a 4:1 ratio

SPARES

SRG Global carries a complete range of spare parts for the pumps and jacks, including an internal jaw assembly to grip the strand. One set of jaws, an operators manual, cleaning brush and maintenance guide is supplied with each new tensioning unit.

Specifications

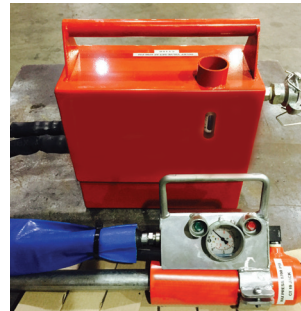
SPECIFICATIONS	CTCD10R	CT10 & CT10R	CT25
OPERATING AIR PRESSURE	80-120 psi (550-830 KPa)	80-120 psi (550-830 KPa)	80-120 psi (550-830 KPa)
MAX. HYDRAULIC PRESSURE	8,700 psi	8,700 psi	10,000 psi (69MPa)
STROKE OF JACK RAM	150mm	150mm	150mm
JACK WEIGHT	10kg	CT10 8kg /CT10r 10kg	18kg
JACK LENGTH	260mm	260mm	260mm
JACK DIAMETER	85mm	85mm	110mm
HOSE LENGTH	3m STANDARD (6m and 10m OPTIONAL)	3m STANDARD (6m and 10m OPTIONAL)	3m STANDARD (6m and 10m OPTIONAL)
PUMP	-	-	PA554 AIR POWERED HYDRAULIC 10,000 psi MAX.
CUTTER PUSH CAPACITY	700 bar	-	-
CUTTER STROKE	20mm	-	-
CUTTER WEIGHT	10kg	-	-
EFFECTIVE CUTTER AREA	19.6cm ²	-	-
CUTTER OIL CAPACITY	39.2cm ²	-	-



CABLE TENSIONING CUTTING UNIT
CTCD10R



CABLE TENSIONING
CT10



CABLE TENSIONING
CT10R



CABLE TENSIONING UNIT
CT25





Cable bolts and accessories

Cable Bolts and Packs

SRG Global can supply variable lengths of 15.2mm cable in the form of strand packs 500m to 800m or precut length cable bolts. Various choices are available to suit differing needs. e.g. bulb or plain, single or multiple strand, debonding of cable for ground support, fish hooks and swages for uphole installation, and factory fitting of grout and / or breather tubes to save site labour costs.

PRE CUT CABLE BOLTS

- 4.3m twin 15.2mm strand cable bolts 1 bulb / m offset
- 6.3m twin 15.2mm strand cable bolts 1 bulb / m offset
- 8.3m twin 15.2mm strand cable bolts 1 bulb/m offset
- 10.3m twin 15.2mm strand cable bolts 1 bulb/m offset
- Other configurations of pre-cut cable bolts available upon request

CABLE COIL PACKS

- 600m strand packs 15.2mm 1 bulb/m on pallet
- 700m strand packs 15.2mm 1 bulb/m on pallet
- 850m strand packs 15.2mm plain on pallet
- Other configurations of cable coil packs available upon request

ACCESSORIES

- Bearing plates
- Standard or coned copper coated barrel and wedge anchors
- Breather tubes
- Grout tube
- Cotton waste
- Additives such as rheobuild and methocel

SPECIFICATIONS

- ACRS accredited high-grade strand - 1860Mpa grade
- 15.2mm stress relieved 7 wire strand to AS/NZS 4672.1-2007
- Single strand minimum breaking load 250kN to 270kN
- Elongation 3.5% minimum with 6.5% average

Cable Installation Equipment

SRG Global has a range of cable stressing units, from 10 tonne to 25 tonne, which are specially designed for use in the harsh mining environment. The air operated hydraulic powered system with a heavy duty housing and steel bodied jacks make them ideal for stressing 15.2mm strand in coal and metalliferous mines.

SRG Global's portable grout mixer is designed for pressure grouting and is ideally suited to the grouting of cable / rock bolts in underground and open cut mines. The mixer and pump are powered by normal mine compressed air and protected by in-line filters and oilers.

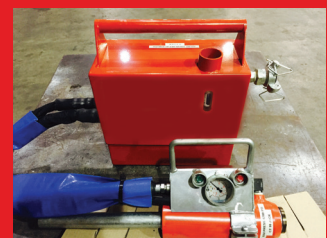
SRG Global carries a complete range of spare parts and our experienced personnel are available for your repair and servicing needs. Both the portable grout mixer and cable stressing units are also available for hire.

Equipment Maintenance

SRG Global also maintain all of the following products:

- Cable Tensioning CT10R Unit
- Cable Tensioning CT25 Unit
- Air Powered Grout Mixer and Pump
- CT10 Pump
- Cutter Shroud
- Cable Tensioning Cutting Dual Unit
- CT10R Jack
- Cable Tensioning CT10
- CT25 Jack
- CT10 Jack

CC10 Cable Cutter









Grouting

SRG Global offer a range of cable tensioning and cutting units including the Cable Tensioning Cutting Dual Unit CTCD10R, Cable Tensioning CT10 and CT10R and the Cable Tensioning CT25 unit.

AIR POWERED GROUT MIXER AND PUMP

Use

SRG Global's portable grout mixer is designed for pressure grouting. It is ideally suited to the grouting of cable bolts in open cut mines.

Features

- The mixer and pump are powered by normal mine compressed air. In-line filters and oilers protect the air motor and pump
- A multi vane air motor is used to drive the paddle mixer, which is specially designed to provide maximum shear and quick mixing of grout
- The mixer can easily cope with conventional grout mixes of 0.4 water / cement ratio, and the much thicker mix of 0.3 water / cement ratio required to give a 'toothpaste' consistency
- The mixing bowl is made from heavy gauge Polyurethane to withstand harsh mining conditions
- With a mounted handle and solid rubber wheels to eliminate punctures, the unit can be readily transported to the job site and worked efficiently in confined space environments
- Drain and clean out facilities fitted
- The pump is easily removed to allow thorough cleaning
- The capacity of the bowl is sufficient for a 8 x 20kg cement bag mix - enough for approximately 35m of grouting in a typical 64mm borehole

Pump

The divorced pump has been specially constructed for pumping cementitious grouts. SRG Global has designed the pump to meet the rugged conditions of the mining industry. The divorced pump configuration isolates the motor from the grout during the pumping operation. The divorced set-up also allows easy knockdown for cleaning and maintenance. Poly construction provides good wear resistance from abrasive grout compounds. SRG Global carries a complete range of spare parts for the grout mixer assembly.

Specifications

MIXER

5.5hp air motor heavy duty reduction gear box

PUMP

30:1 divorced, delivery continuous duty 12 litres/min (3gpm)

STROKE

100mm

AIR PRESSURE RANGE

40-180 psi (3-12 bar)

AIR CONSUMPTION

12cfm per gallon of fluid @ 100psi (6m³ > / hr / litre @ 7 bar)

AIR POWERED GROUT PUMP

Use

The air powered grout pump has been developed specifically for pumping cement based grouts. The practical and lightweight design makes it invaluable in underground and open pit situations.

Features

- Pump can be powered by normal mine compressed air. An inline air filter and oiler should be fitted to protect the air motor
- Pump is easily maintained by personnel with very little mechanical skills
- The pump can cope with conventional grout mixes of 0.4 water / cement ratio, and the much thicker mix of 0.3 water / cement ratio required to give a 'toothpaste' consistency
- The pumps rugged construction does not allow grout to enter the air motor during operation
- Spare parts are readily available

Specifications

FLUID PRESSURE RATIO

30:1

DELIVERY (CONTINUOUS)

3gpm (12 L/min)

DELIVERY (INTERMITTENT)

6gpm (25 L/min)

CYCLES PER GALLON

20

CYCLES PER LITRE

6

MAX RECOMMENDED CYCLES P/MIN

60

AIR PRESSURE OPERATING RANGE

40-180 psi (3-12 bar)

AIR CONSUMPTION

13 cfm per gallon of fluid at 100 psi

SRG GLOBAL AUSCON PT80 GROUT

SRG Global Auscon PT80 is a high performance, shrinkage-compensated, aluminate free, post-tensioning pre-blended cement grout. It has no sand added, a pre-blended Portland cement base containing carefully selected additives. It is pump-able and has enhanced flow-ability making it ideal for grouting post-tensioned cables, stress bars and ground anchors including, cable bolting, temporary ground anchors, soil nails, permanent ground anchors and other high-performance grouting applications.



Our global footprint

The information and details contained in this brochure are indicative and intended for marketing purposes only. They should not be relied upon as being complete and accurate. Prospective purchasers should make and rely on their own enquiries and a competent, experienced and qualified professional should always be consulted prior to using the product. SRG Global, its employees, agents and other representatives do not accept any responsibility or liability for any direct, indirect, consequential or other loss or damage suffered by any person arising out of or in connection with any reliance on the enclosed information. SRG reserves the right to amend or modify any information contained herein at any time and without notice. Any subsequent sale will be based on our terms and conditions.

srgglobal.com.au

CORPORATE HEAD OFFICE
Level 1, 338 Barker Rd
Subiaco WA 6008
+61 8 9267 5400
info@srgglobal.com.au

QLD
642 Old Gympie Rd
Narangba 3018
+61 7 3888 6655

WA
5 Riversdale Rd
Welshpool 6106
+61 8 9267 5400

VIC
2/290 Salmon St
Port Melbourne, VIC 3207
+61 3 9296 8100

NSW
S3/L1, 75 Carnarvon St
Silverwater, NSW 2128
+61 2 8767 6200

**MAKING
THE
COMPLEX
SIMPLE**